

201

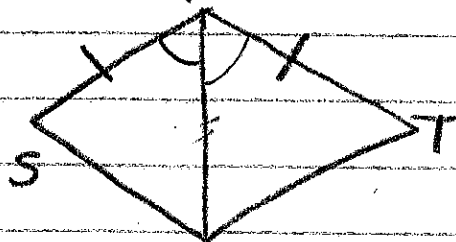
4.4

4.5 HW

P245 35-37

P252 3-5, 7, 33, 34

35.

 $P: \triangle SPQ \cong \triangle TPQ$ 

Statements

①  $PQ$  bisects  $\angle SPT$ ,  $\overline{SP} \cong \overline{TP}$ ②  $\overline{PQ} \cong \overline{PQ}$ ③  $\angle SPQ \cong \angle TPQ$ ④  $\triangle SPQ \cong \triangle TPQ$ 

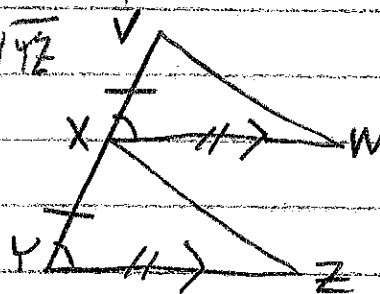
Reasons

① Given

② Reflexive

③ def of Bisector

④ SAS

G:  $\overline{VX} \cong \overline{XY}$ ,  $\overline{XW} \cong \overline{YZ}$ ,  $\overline{XW} \parallel \overline{YZ}$ 36. P:  $\triangle VXW \cong \triangle XYZ$ 

Statements

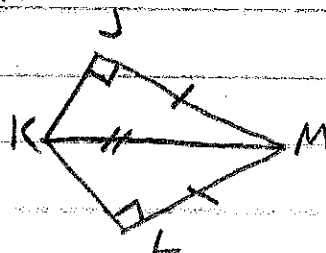
①  $\overline{VX} \cong \overline{XY}$ ,  $\overline{XW} \cong \overline{YZ}$  $\overline{XW} \parallel \overline{YZ}$ ②  $\angle Y \cong \angle VXW$ ③  $\triangle VXW \cong \triangle XYZ$ 

Reasons

① Given

② Corr.  $\angle$ s Post.

③ SAS

37. G:  $\overline{JM} \cong \overline{LM}$ P:  $\triangle JKM \cong \triangle LKM$ ①  $\overline{JM} \cong \overline{LM}$ ②  $\overline{KM} \cong \overline{KM}$ ③  $\triangle JKM \cong \triangle LKM$ 

① Given

② Reflexive

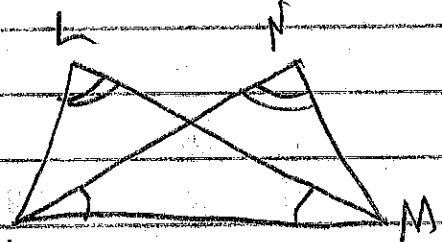
③ HL

p252

3. AAS      4. NO      5. ASA  
7. B(AAS)

33. G:  $\angle NKM \cong \angle LMK$   
 $\angle L \cong \angle N$

P:  $\triangle NMK \cong \triangle LKM$



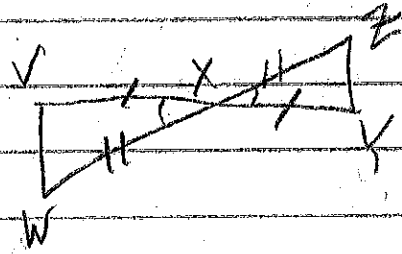
Statements

Reasons

- ①  $\overline{MK} \cong \overline{MK}$
- ②  $\triangle NMK \cong \triangle LKM$

- ① Given
- ② Reflexive
- ③ AAS

34. G: X is midpt  $\overline{WZ}$  &  $\overline{VY}$   
P:  $\triangle VWX \cong \triangle YZX$



- ① ~
- ②  $\overline{VX} \cong \overline{VX}$   
 $\overline{WX} \cong \overline{ZX}$
- ③  $\angle VXW \cong \angle YXZ$
- ④  $\triangle VWX \cong \triangle YZX$

- ①
- ② def of midpt
- ③ Vert  $\angle$ s  $\cong$
- ④ SAS